



Intertie Trading Subcommittee

Consistency of Data Provided to the NEB by the IMO

George Katsuras

Agenda Item #4

Intertie Trading Sub-committee

March 29, 2004

Data Consistency

- FERC Wholesale Market Platform
 - Rate Pancaking Elimination
 - Trading Volumes

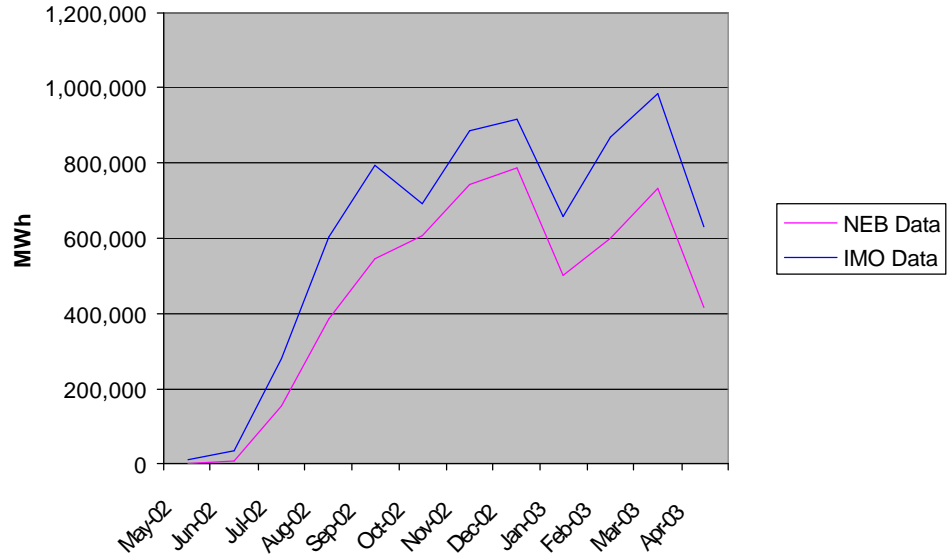
Data Consistency

- Potential Inconsistency Sources
 - Reporting Obligations
 - Net vs. Gross
 - Wheel-throughs and Spot Sales

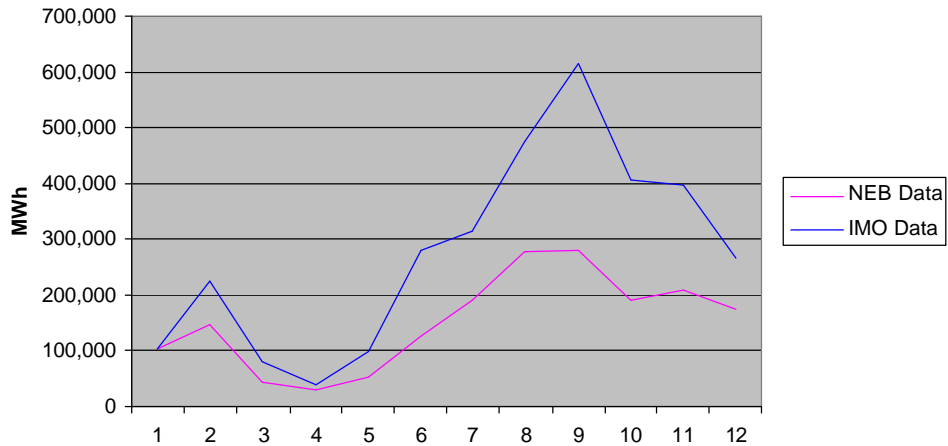
Total Scheduled Transactions (MWh)

	NEB Data	IMO Data	Variance	NEB Data	IMO Data	Variance
	Imports	Imports		Exports	Exports	
May-02	1,296	14,692	1034%	102,923	104,235	1%
Jun-02	7,487	36,089	382%	147,992	225,449	52%
Jul-02	155,229	279,357	80%	42,509	80,296	89%
Aug-02	388,043	605,936	56%	27,545	36,211	31%
Sep-02	544,150	797,060	46%	52,947	98,460	86%
Oct-02	608,920	694,629	14%	127,079	280,652	121%
Nov-02	744,771	886,281	19%	189,758	315,229	66%
Dec-02	786,825	913,310	16%	276,935	475,944	72%
Jan-03	503,613	660,934	31%	278,130	616,464	122%
Feb-03	600,286	868,286	45%	190,016	407,259	114%
Mar-03	730,503	984,796	35%	206,538	397,544	92%
Apr-03	416,970	630,121	51%	172,941	265,839	54%
	5,488,093	7,371,489	34%	1,815,312	3,303,583	82%

Total Scheduled Transactions Imports



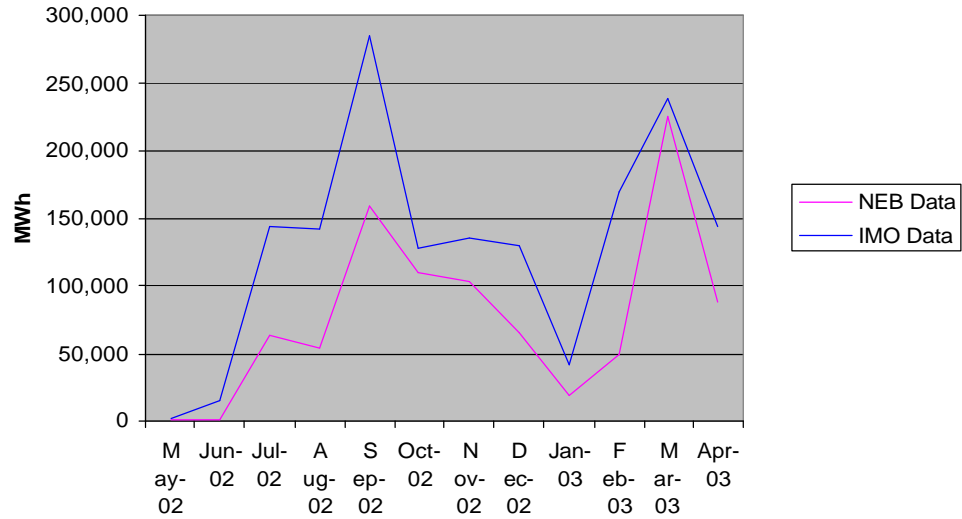
Total Scheduled Transactions Exports



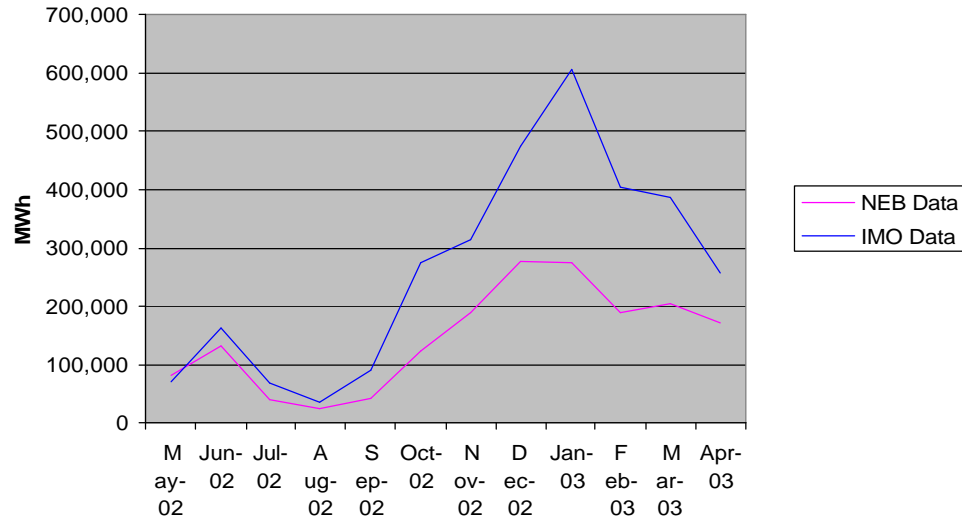
New York Sheduled Transactions (MWh)

	NEB Data	IMO Data	Variance	NEB Data	IMO Data	Variance
	Imports	Imports		Exports	Exports	
May-02	1,150	1,814	58%	80,868	71,731	-11%
Jun-02	950	14,300	1405%	134,311	164,186	22%
Jul-02	63,283	143,848	127%	40,331	69,335	72%
Aug-02	53,441	141,172	164%	25,937	34,893	35%
Sep-02	157,894	284,481	80%	43,820	89,756	105%
Oct-02	109,666	128,054	17%	123,491	273,927	122%
Nov-02	103,582	135,022	30%	189,662	314,979	66%
Dec-02	65,374	129,260	98%	276,240	475,073	72%
Jan-03	18,823	41,662	121%	274,330	605,542	121%
Feb-03	49,079	169,795	246%	189,126	405,859	115%
Mar-03	224,914	238,634	6%	205,232	386,876	89%
Apr-03	87,330	143,551	64%	171,821	256,545	49%
	935,486	1,571,592	68%	1,755,169	3,148,703	79%

New York Scheduled Transactions Imports



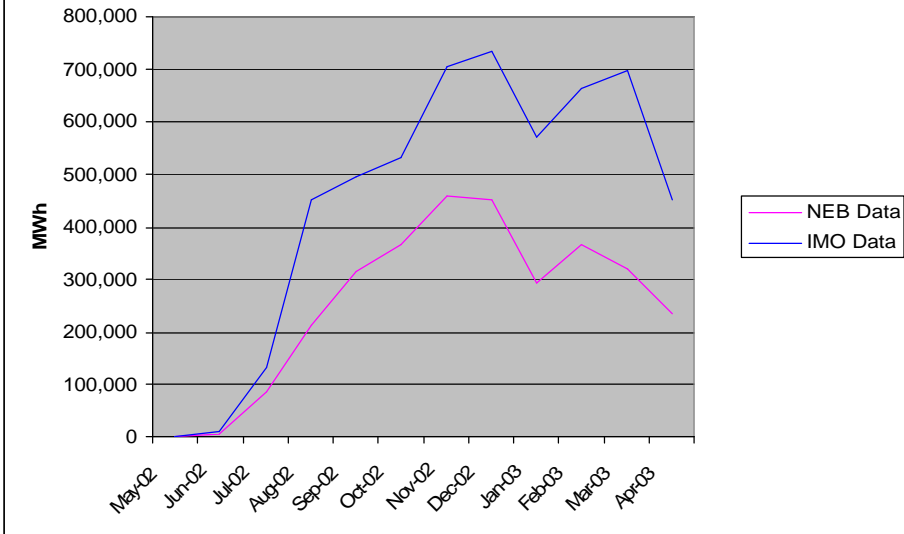
New York Scheduled Transactions Exports



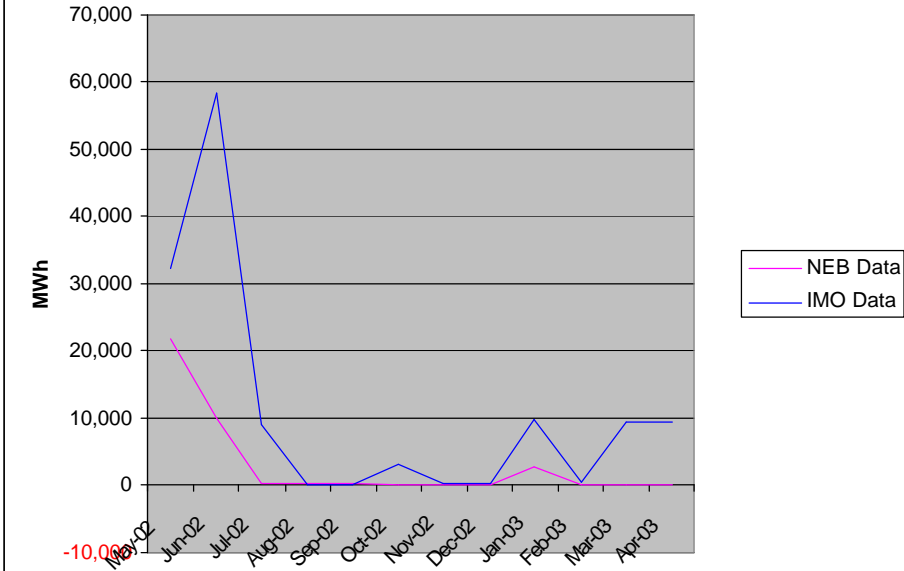
Michigan Scheduled Transactions (MWh)

	NEB Data	IMO Data	Variance	NEB Data	IMO Data	Variance
	Imports	Imports		Exports	Exports	
May-02	146	388	166%	21,655	32,104	48%
Jun-02	6,396	10,553	65%	9,941	58,248	486%
Jul-02	87,245	131,316	51%	138	9,021	6427%
Aug-02	212,714	453,314	113%	192	0	-100%
Sep-02	313,914	493,774	57%	192	0	-100%
Oct-02	364,638	529,307	45%	63	3,200	4996%
Nov-02	456,191	703,271	54%	96	250	161%
Dec-02	452,242	732,983	62%	0	176	#DIV/0!
Jan-03	291,667	570,829	96%	2,680	9,662	261%
Feb-03	366,190	661,805	81%	0	510	#DIV/0!
Mar-03	321,185	697,282	117%	0	9,363	#DIV/0!
Apr-03	236,284	451,030	91%	0	9,194	#DIV/0!
	3,108,812	5,435,850	83%	34,956	131,728	276%

Michigan Scheduled Transactions Imports



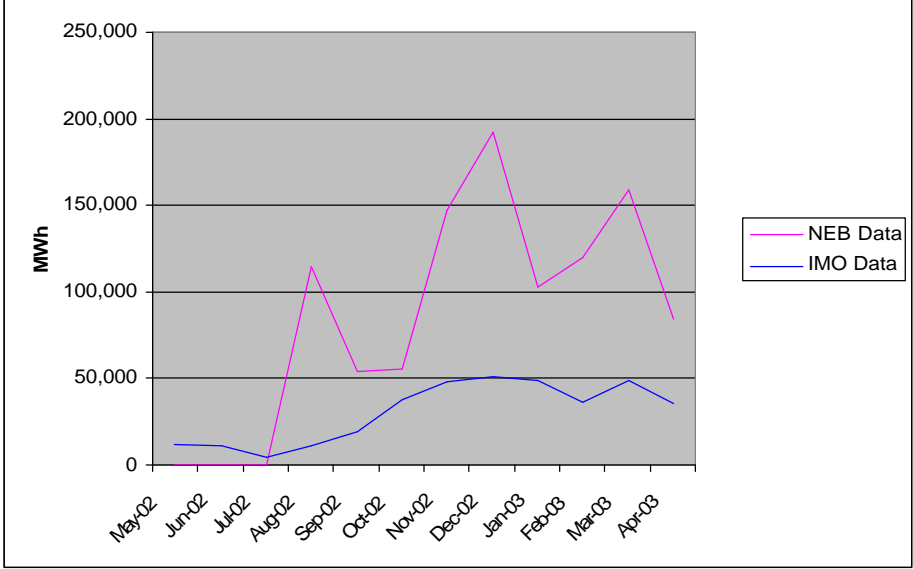
Michigan Scheduled Transactions Exports



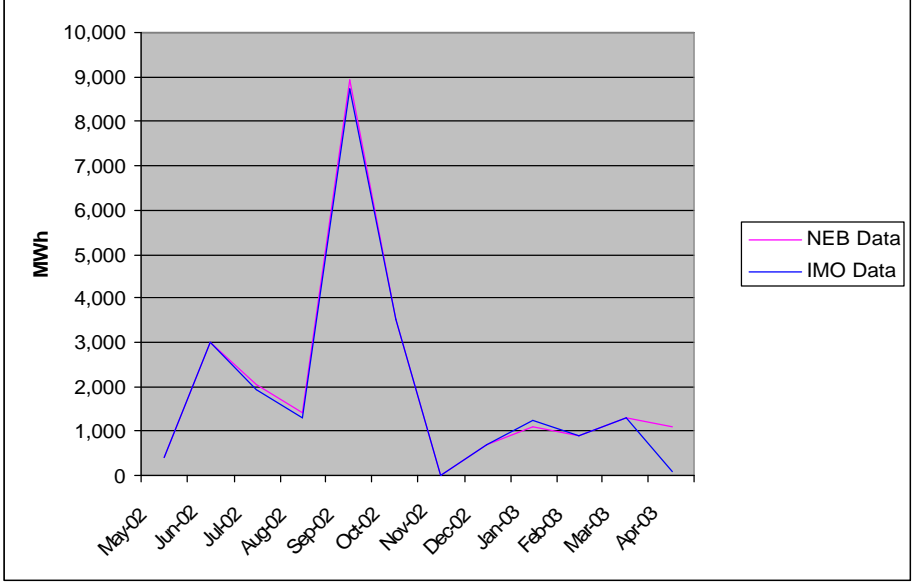
Minnesota Scheduled Transactions (MWh)

	NEB Data	IMO Data	Variance	NEB Data	IMO Data	Variance
	Imports	Imports		Exports	Exports	
May-02	0	12,490	#DIV/0!	400	400	0%
Jun-02	0	11,235	#DIV/0!	3,015	3,015	0%
Jul-02	0	4,194	#DIV/0!	2,040	1,940	-5%
Aug-02	114,342	11,450	-90%	1,416	1,318	-7%
Sep-02	54,057	18,806	-65%	8,935	8,704	-3%
Oct-02	55,396	37,268	-33%	3,525	3,525	0%
Nov-02	146,707	47,988	-67%	0	0	#DIV/0!
Dec-02	191,794	51,067	-73%	695	695	0%
Jan-03	102,401	48,443	-53%	1,120	1,260	13%
Feb-03	119,912	36,686	-69%	890	890	0%
Mar-03	158,591	48,880	-69%	1,305	1,305	0%
Apr-03	83,884	35,540	-58%	1,120	100	-91%
	1,027,084	364,047	-64%	24,461	23,152	-8%

Minnesota Scheduled Transactions Imports



Minnesota Scheduled Transactions Exports

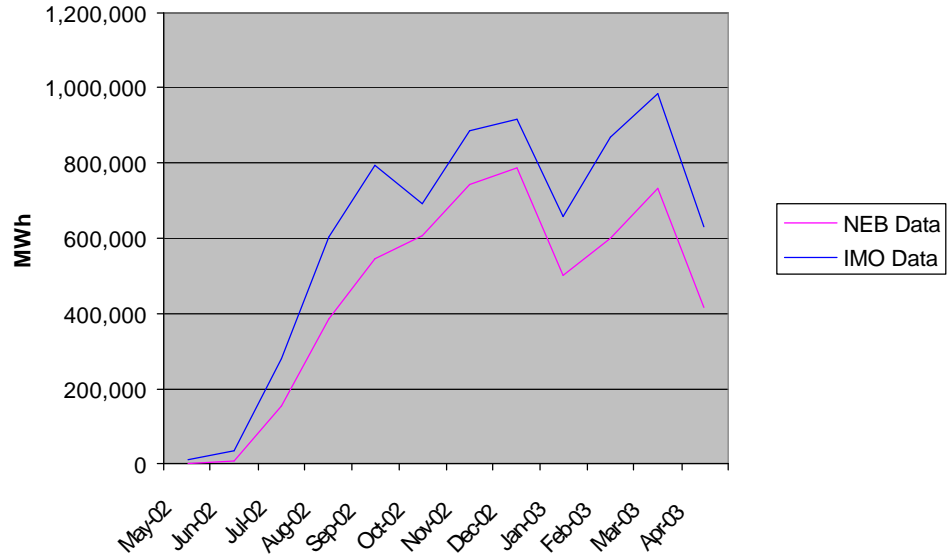


Other Transactions (MWh)		
	NEB Data	NEB Data
	Imports	Exports
May-02		
Jun-02	141	725
Jul-02	4,701	
Aug-02	7,546	
Sep-02	18,285	
Oct-02	79,220	
Nov-02	38,291	
Dec-02	77,415	
Jan-03	90,722	
Feb-03	65,105	
Mar-03	25,813	1
Apr-03	9,472	
	416,711	726

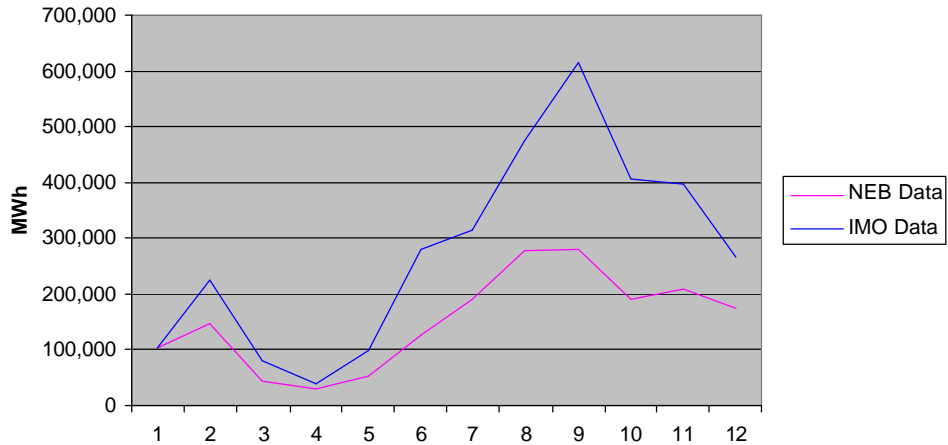
Total Scheduled Transactions (MWh)

	NEB Data	IMO Data	Variance	NEB Data	IMO Data	Variance
	Imports	Imports		Exports	Exports	
May-02	1,296	14,692	1034%	102,923	104,235	1%
Jun-02	7,487	36,089	382%	147,992	225,449	52%
Jul-02	155,229	279,357	80%	42,509	80,296	89%
Aug-02	388,043	605,936	56%	27,545	36,211	31%
Sep-02	544,150	797,060	46%	52,947	98,460	86%
Oct-02	608,920	694,629	14%	127,079	280,652	121%
Nov-02	744,771	886,281	19%	189,758	315,229	66%
Dec-02	786,825	913,310	16%	276,935	475,944	72%
Jan-03	503,613	660,934	31%	278,130	616,464	122%
Feb-03	600,286	868,286	45%	190,016	407,259	114%
Mar-03	730,503	984,796	35%	206,538	397,544	92%
Apr-03	416,970	630,121	51%	172,941	265,839	54%
	5,488,093	7,371,489	34%	1,815,312	3,303,583	82%

Total Scheduled Transactions Imports



Total Scheduled Transactions Exports



Data Consistency

- Potential Solutions
 - IMO Bulletin Clarifying Reporting Obligations
 - Use Gross Data
 - Update NEB Reporting